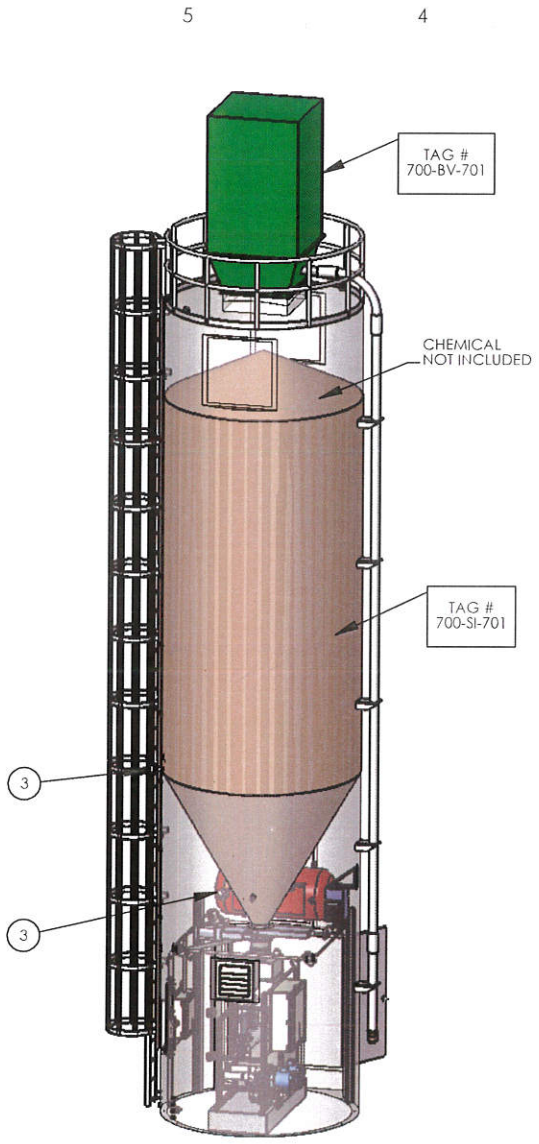
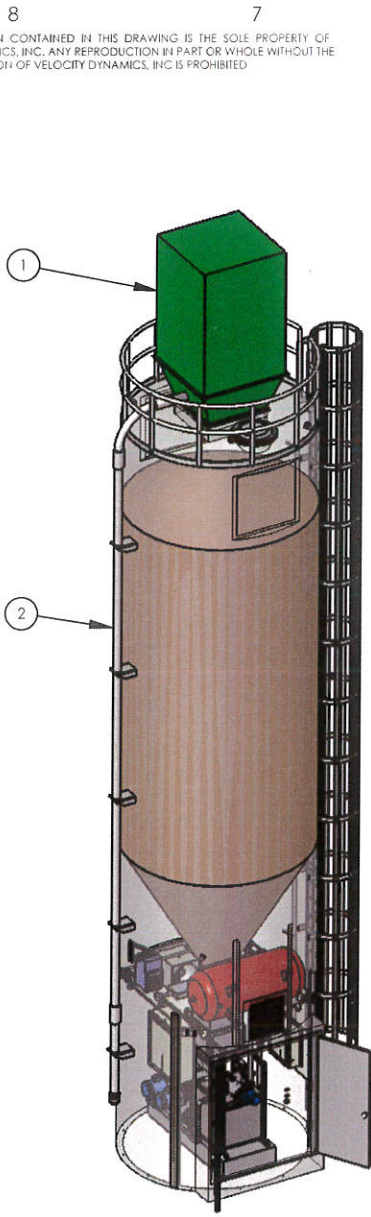


THE INFORMATION CONTAINED IN THIS DRAWING IS THE SOLE PROPERTY OF VELOCITY DYNAMICS, INC. ANY REPRODUCTION IN PART OR WHOLE WITHOUT THE WRITTEN PERMISSION OF VELOCITY DYNAMICS, INC IS PROHIBITED.

REVISIONS				
REV	ECO	DESCRIPTION	DATE	APPROVED
A	SO 634	INITIAL RELEASE	7/14/11	J Skuba
B	SO 634	COST CUTTING MEASURES, CHANGES PER REVIEW	10/3/11	J Skuba

D  
C  
B  
A



NOTES -

1) ITEMS NOT SPECIFICALLY LISTED IN THE BILL OF MATERIALS (SHEET 3) ARE SUPPLIED BY OTHERS

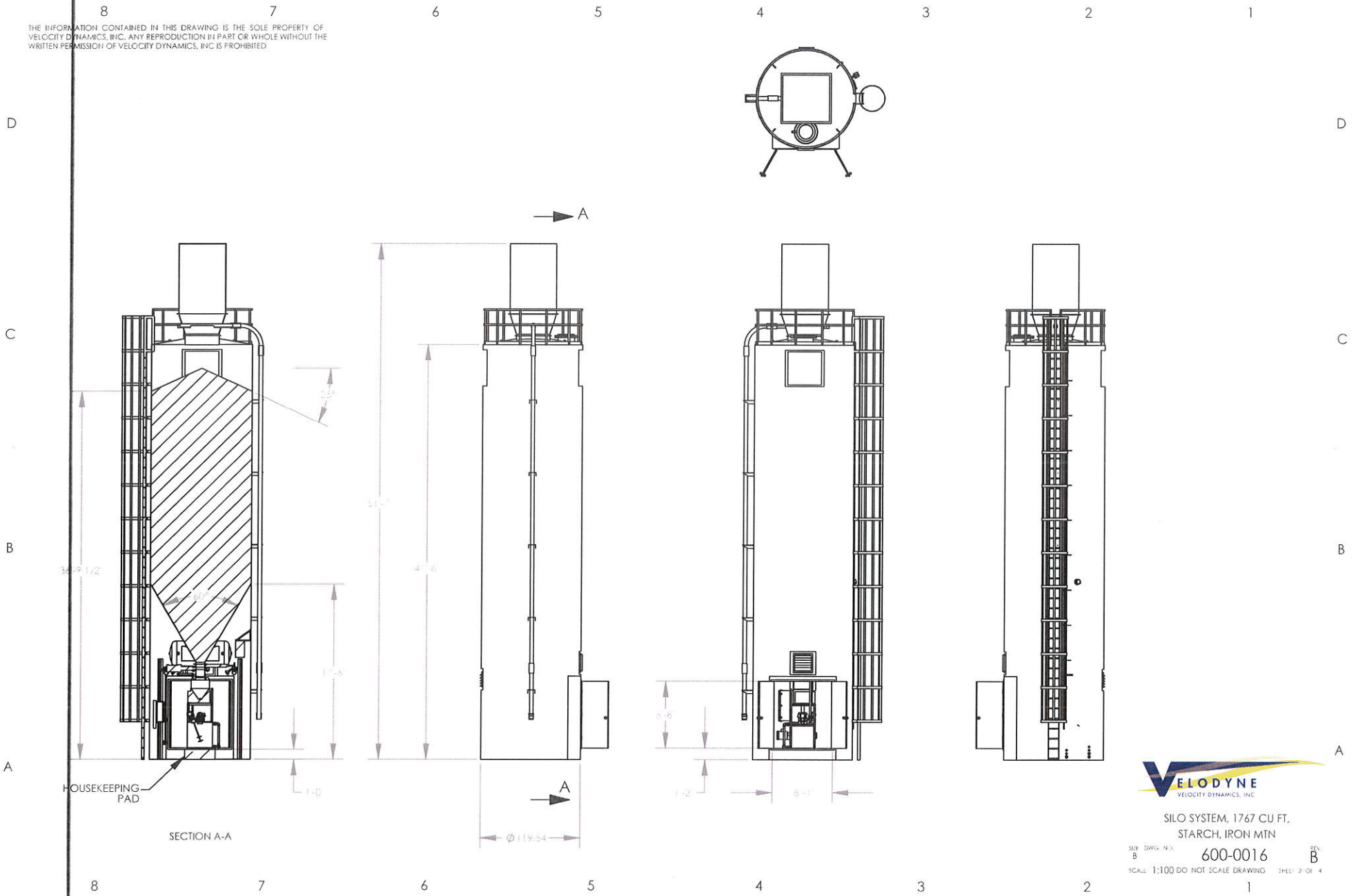
D  
C  
B  
A

UNLESS OTHERWISE SPECIFIED DIMENSIONS ARE IN INCHES  
 DECIMALS ANGLES  
 .XXX = ±.015 ± .1°  
 .XXX = ±.005  
 63 MINIMUM  
 FILET RADI TO BE .005 MAXIMUM  
 BREAK ALL EDGES .005/.010  
 MATERIAL  
 FILE NAME: 600-0016  
 DO NOT SCALE DRAWING

**VELOCITY DYNAMICS, INC.**  
 SILO SYSTEM, 1767 CU FT,  
 STARCH, IRON MTN  
 600-0016  
 SHEET 1 OF 4

8 7 6 5 4 3 2 1

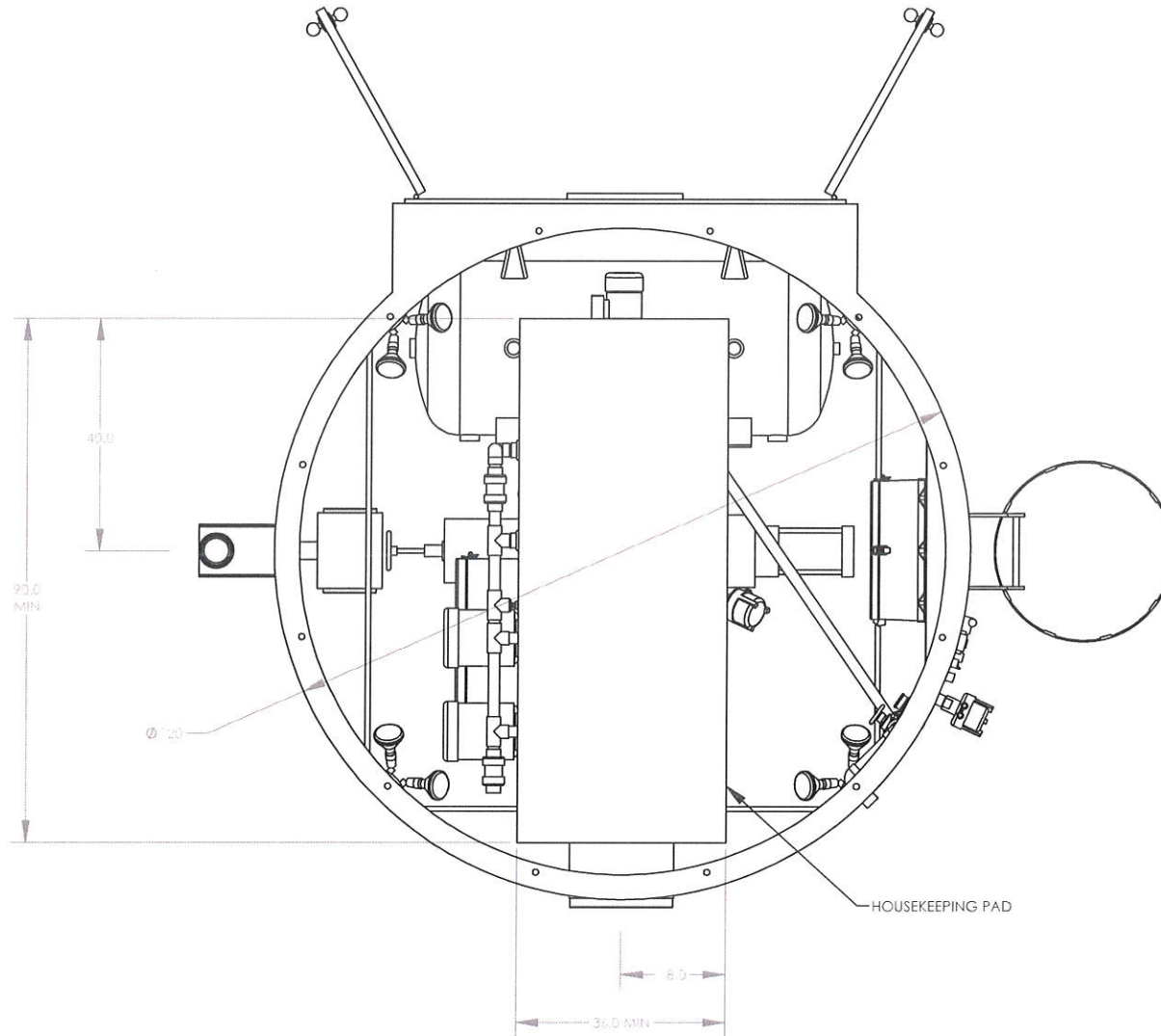
THE INFORMATION CONTAINED IN THIS DRAWING IS THE SOLE PROPERTY OF VELOCITY DYNAMICS, INC. ANY REPRODUCTION IN PART OR WHOLE WITHOUT THE WRITTEN PERMISSION OF VELOCITY DYNAMICS, INC IS PROHIBITED.



SILO SYSTEM, 1767 CU. FT.,  
 STARCH, IRON MTN

REV. B 600-0016 REV. B  
 SCALE: 1:100 DO NOT SCALE DRAWING SHEET 2 OF 4

THE INFORMATION CONTAINED IN THIS DRAWING IS THE SOLE PROPERTY OF VELOCITY DYNAMICS, INC. ANY REPRODUCTION IN PART OR WHOLE WITHOUT THE WRITTEN PERMISSION OF VELOCITY DYNAMICS, INC IS PROHIBITED

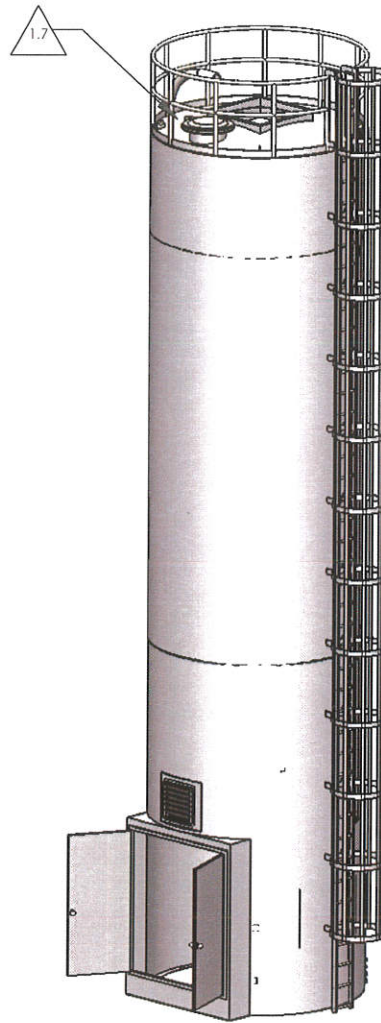
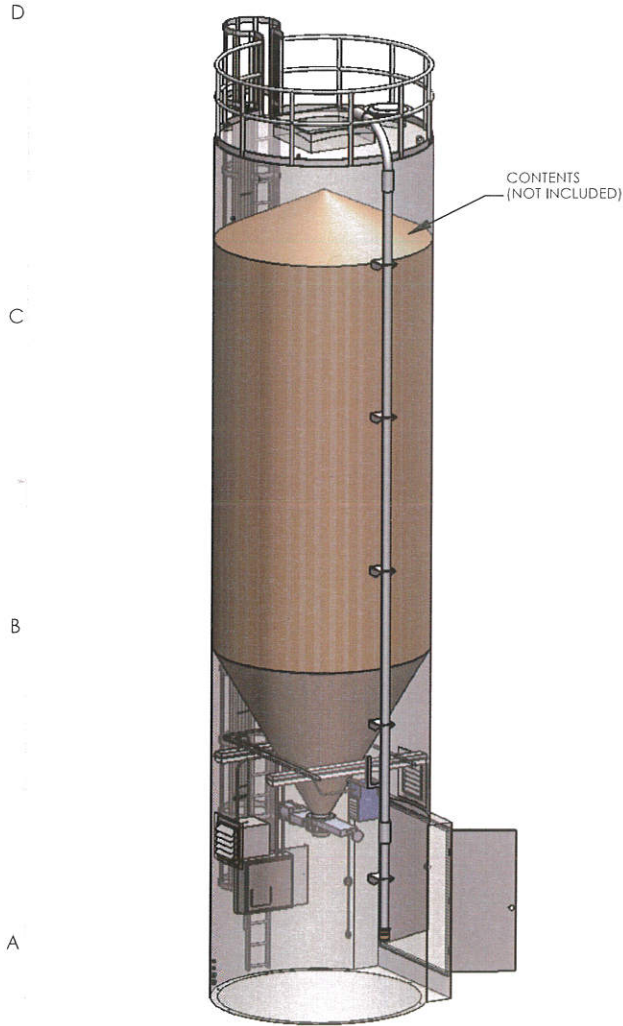


SILO SYSTEM, 1767 CU FT,  
STARCH, IRON MTN

REV: B  
DWG. NO. 600-0016  
SCALE: 1:20 DO NOT SCALE DRAWING SHEET 4 OF 4

8 7 6 5 4 3 2 1

THE INFORMATION CONTAINED IN THIS DRAWING IS THE SOLE PROPERTY OF VELOCITY DYNAMICS, INC. ANY REPRODUCTION IN PART OR WHOLE WITHOUT THE WRITTEN PERMISSION OF VELOCITY DYNAMICS, INC IS PROHIBITED



REVISIONS				
REV	ECO	DESCRIPTION	DATE	APPROVED
A	SO 634	INITIAL RELEASE	7/7/11	J Skuba

NOTES -

- 1.1) FOR STORAGE OF FREE FLOWING STARCH POWDER @ 42 LB/ CU FT COMPACTED
- 1.2) 1767 CU FT WORKING CAPACITY @ 30 DEG ANGLE OF REPOSE
- 1.3) IBC 2009/ASCE 7-05:  
 $S_s = 70\% G$   
 $S_1 = 22.15\% G$   
 GROUP 1  
 SITE CLASS D  
 CATEGORY D  
 $R = 3.00$   
 $I = 1.00$   
 $v = 0.193 W$   
 90 MPH WIND LOAD (EXPOSURE C)
- 1.4) A-36 CARBON STEEL TANK AND SKIRT
- 1.5) ALL WELD JOINTS ON SILO TO BE FULL PENETRATION BUTT WELDS BOTH SIDES PER AWS STANDARDS
- 1.6) TANK AND SKIRT INTERIOR EPOXY PAINTED 2 MILS AVG PER SSPC PA-2 WHITE, EXTERIOR EPOXY PRIMER 2 MILS AVG PER SSPC PA-2, EXTERIOR TOP COAT PERFORMANCE URETHANE 1.5 MILS AVG, WHITE, APPLIED PER SSPC-SP6 COMMERCIAL BLAST AND THERMAL CURING
- 1.7) NON-SLIP COATING ON ROOF, MANUFACTURER'S STANDARD COLOR
- 1.8) OTHER SPECIFICATIONS:  
 20 LB/SQ FT DECK LIVE LOAD  
 DESIGN PRESSURE 14 OZ PER SQ IN, VACUUM 1 OZ PER SQ IN  
 AMBIENT OPERATING TEMPERATURES  
 LOADS IMPOSED BY FLUIDIZED FLOW MATERIAL PATTERN

UNLESS OTHERWISE SPECIFIED  
 DIMENSIONS ARE IN INCHES  
 TOLERANCES:  
 DECIMALS .XX = ± 0.15  
 .XXX = ± 0.05  
 ANGLES ± 1°  
 MINIMUM  
 FILET RADIUS TO BE .005 MAXIMUM  
 BREAK ALL EDGES .005/0.10  
 MATERIAL  
 FILENAME  
 600-0015  
 DO NOT SCALE DRAWING

CAD GENERATED DRAWING (PREFERRED)  
 DRAWING PER ANSI Y14.3M-1994  
 APPROVALS  
 DRAWN  
 CHECKED  
 T OSTRUM  
 RESP ENG  
 P PLACHE  
 QUAL ENG



SILO, 10' DIA, 1767 CU FT, IRON MTN

SHEET 1 OF 10  
 SCALE 1:66 CAD FILE  
 600-0015  
 REV A

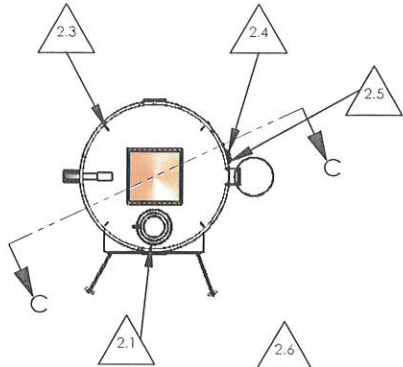
8 7

THE INFORMATION CONTAINED IN THIS DRAWING IS THE SOLE PROPERTY OF VELOCITY DYNAMICS, INC. ANY REPRODUCTION IN PART OR WHOLE WITHOUT THE WRITTEN PERMISSION OF VELOCITY DYNAMICS, INC IS PROHIBITED

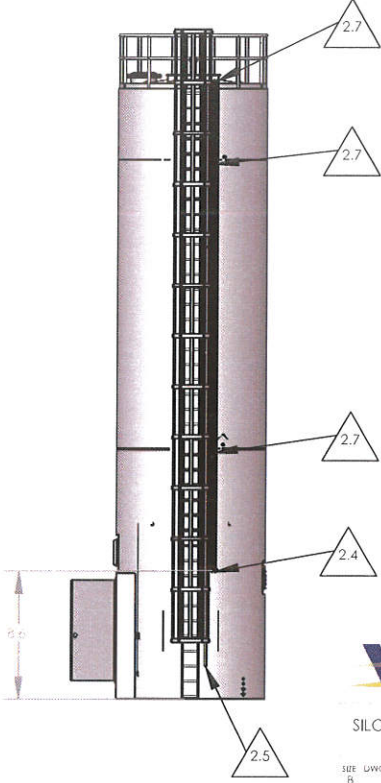
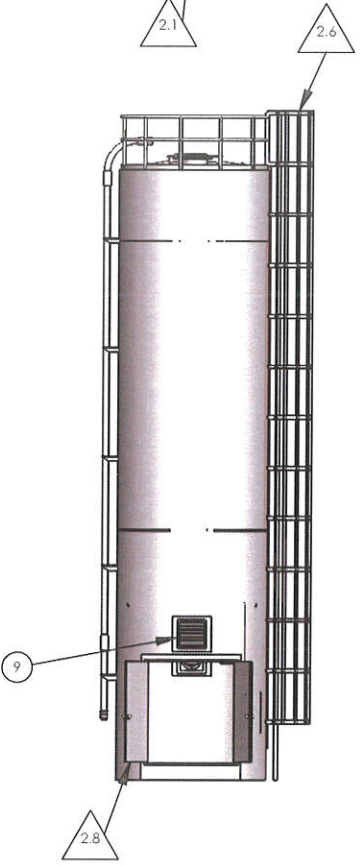
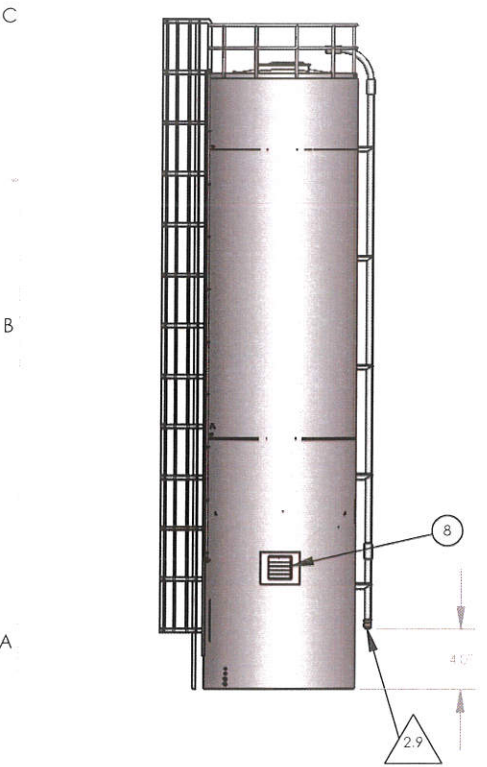
NOTES -

- 2.1) 20" COMBINATION MANWAY AND PRESSURE RELIEF VALVE (2.0 OZ PRESSURE, 0.5 OZ VACUUM)
- 2.3) MANUFACTURER'S STANDARD LIFTING LUGS 4X
- 2.4) 3X 3/4" CONDUIT RUN FROM INSIDE SKIRT TO LEVEL WITH EAVE WITH FITTINGS (SEE 2.7) AND 4X SKIRT PASS THRU
- 2.5) 1" SCHEDULE 40 GALVANIZED PIPE RUN FROM 3 FT ABOVE GROUND LEVEL TO LEVEL WITH EAVE, NPT THREADS BOTH ENDS

6 5 4 3 2 1



- 2.6) OSHA APPROVED LADDER, HAND RAIL, AND TOE PLATE PER MANUFACTURER'S STANDARD, WITH LOCKABLE SECURITY HOOP
- 2.7) 3X PULLING ELBOWS ON TOPS OF 3X 3/4" CONDUIT, AND 2X PULLING TEES LOCATED NEAR EACH OF 2X LEVEL SWITCH PORTS (SEE SHEET 5)
- 2.8) 6'-0" X 6'-8" INDUSTRIAL LOCKABLE WALK-IN DOUBLE DOOR WITH LOCKSETS
- 2.9) 4" SCHEDULE 40 PAINTED STEEL FILL LINE ASSEMBLY INCLUDING 24" R ELBOW WITH CERAMIC WEAR PLATE, SUPPORT BRACKETS, MALE QUICK CONNECT W/ LIMIT SWITCH, AND DUST CAP. DUST CAP TO HAVE FEATURE (NOTCH OR GROOVE) TO PREVENT ACTUATING LIMIT SWITCH WHEN COVERING FILL LINE



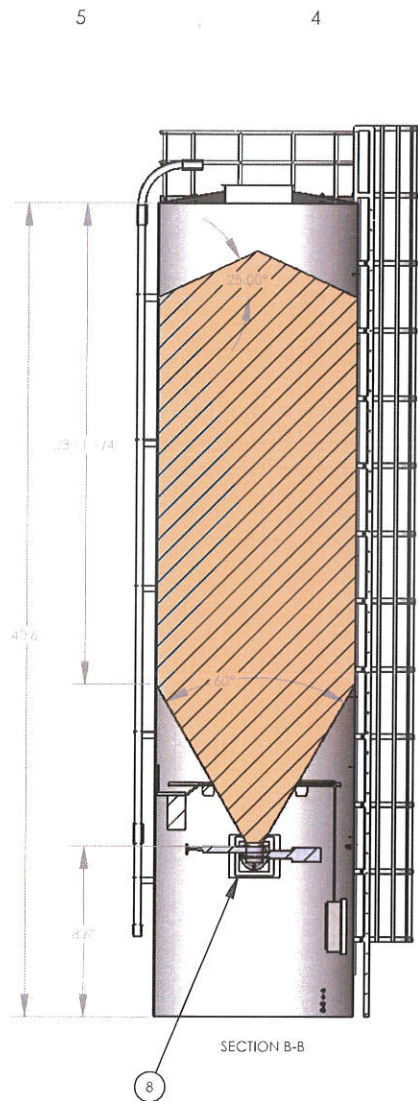
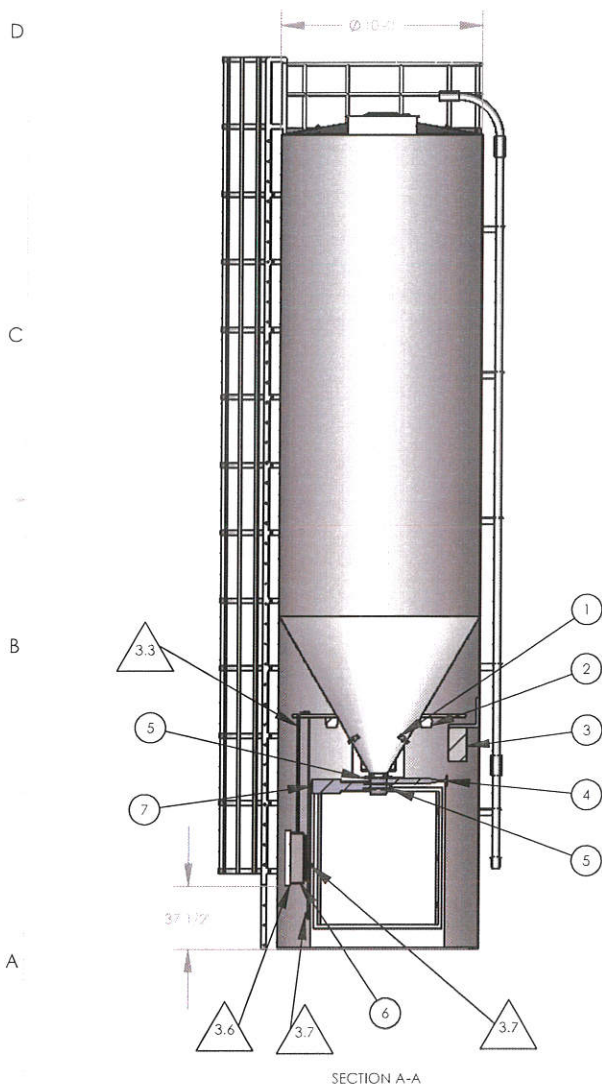
8 7 6 5 4 3 2 1



SILO, 10' DIA, 1767 CU FT, IRON MTN

SIZE: LWG: HQ  
B 600-0015 REV: A  
SCALE: 1:96 DO NOT SCALE DRAWING SHEET 2 OF 10

THE INFORMATION CONTAINED IN THIS DRAWING IS THE SOLE PROPERTY OF VELOCITY DYNAMICS, INC. ANY REPRODUCTION IN PART OR WHOLE WITHOUT THE WRITTEN PERMISSION OF VELOCITY DYNAMICS, INC IS PROHIBITED



ITEM #	NUMBER	DESCRIPTION	QTY
1	295-0270	NOZZLE ASSY, AIR SWEEP, 1.5"	3
<del>X</del>	176-0011	LIGHT FIXTURE, FLUORESCENT, 8" X 2', 120 VAC, DAMP SERVICE	2
3	295-0049	HEATER, FORCED AIR, 10kW, 480 VAC	1
4	248-0249	VALVE, GATE, 10", MAINTENANCE, MANUAL	1
5	221-0077	GASKET, 8" ANSI 150 LB, NEOPRENE	3
6	975-1001	CONTROL PANEL, POWER DISTRIBUTION	1
7	248-0250	VALVE, GATE, 10", PNEUMATIC	1
8	295-0051	EXHAUST FAN, 16 X 16, 2500 CFM	1
9	295-0050	LOUVERS, 20" X 20, AL	1

NOTES -

- 3.1) ITEMS 1 THRU 11 SUPPLIED BY VELOCITY DYNAMICS FOR INSTALLATION BY TANK MANUFACTURER
- 3.2) LOCATION AND MOUNTING OF ITEMS 1, 2 & 4 TO BE DETERMINED BY TANK MANUFACTURER AND DEFACTO INDUSTRY STANDARDS
- 3.3) ITEMS 2, 3, & 8 TO BE WIRED TO ITEM 6 BY TANK MANUFACTURER. SEE SCHEMATIC SHEET 10
- 3.5) DRY CHEMICAL SHOWN FOR ILLUSTRATION PURPOSES ONLY. ALL CHEMICAL TO BE SUPPLIED BY END USER
- 3.6) PLATE TO SUPPORT POWER DISTRIBUTION PANEL, TRANSFORMER (NOT SHOWN), AND JUNCTION BOX (NOT SHOWN) MADE OF MINIMUM 1/8" THICK STEEL PLATE AND WELDED TO INSIDE OF SKIRT. DETAILS SHEET 9
- 3.7) SWITCHES FOR INTERIOR LIGHTS AND CONVENIENCE OUTLET TO BE PROVIDED AND WIRED BY TANK MANUFACTURER



SILO, 10' DIA, 1767 CU FT, IRON MTN

SHEET NO. B DWG NO. 600-0015 REV. A  
SCALE 1:72 DO NOT SCALE DRAWING SHEET 3 OF 10

8 7 6 5 4 3 2 1

THE INFORMATION CONTAINED IN THIS DRAWING IS THE SOLE PROPERTY OF VELOCITY DYNAMICS, INC. ANY REPRODUCTION IN PART OR WHOLE WITHOUT THE WRITTEN PERMISSION OF VELOCITY DYNAMICS, INC IS PROHIBITED

NOTES -

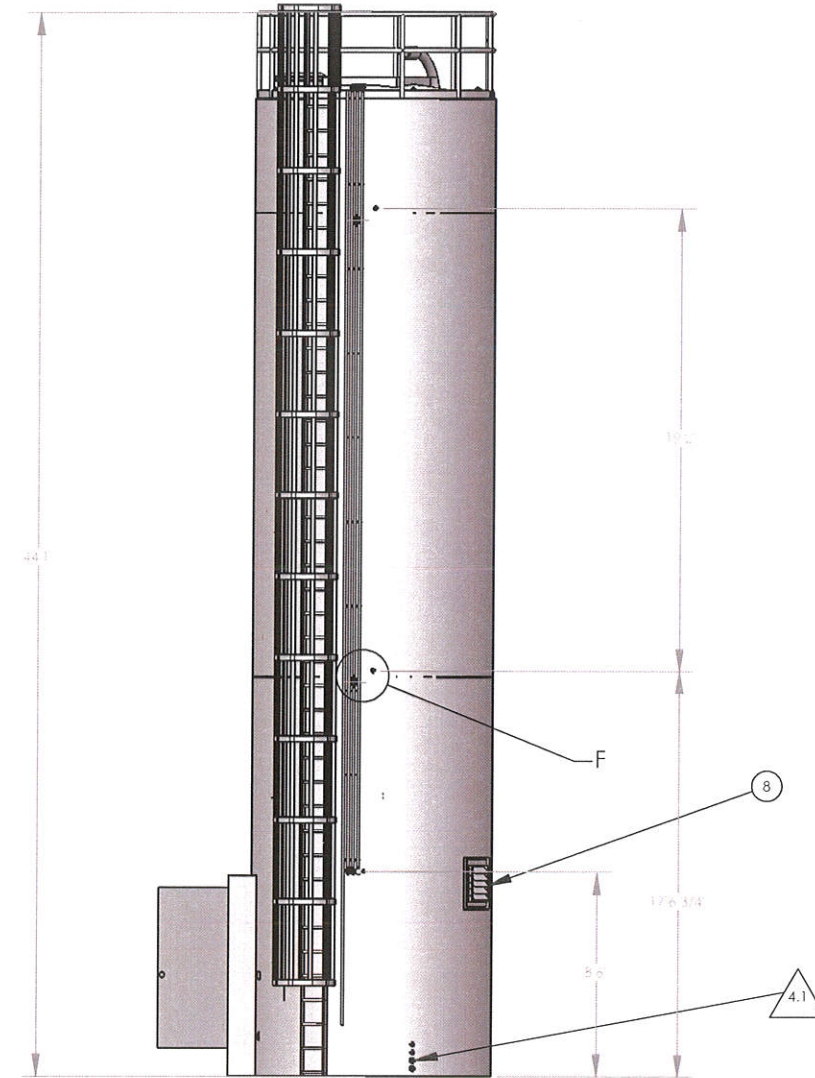
- 1) 4X LIQUID FEEDTHROUGHS, 2X 1.5" FULL COUPLINGS,  
2X 1" FULL COUPLINGS, WELDED INTO SKIRT WALL

D

C

B

A



D

C

B

A



SILO, 10' DIA, 1767 CU FT, IRON MTN

SHEET NO. 600-0015 REV. A  
SCALE 1:60 DO NOT SCALE DRAWING SHEET 4 OF 10

8

7

6

5

4

3

2

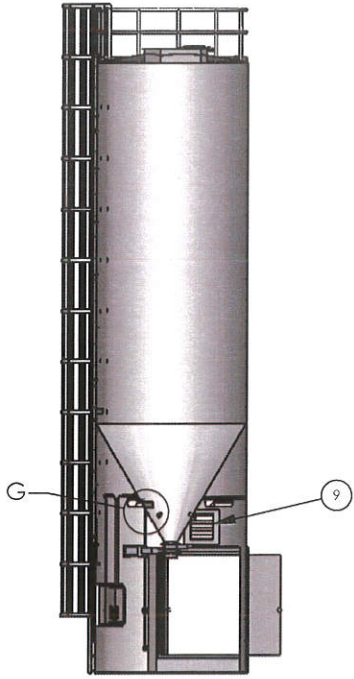
1

8 7 6 5 4 3 2 1

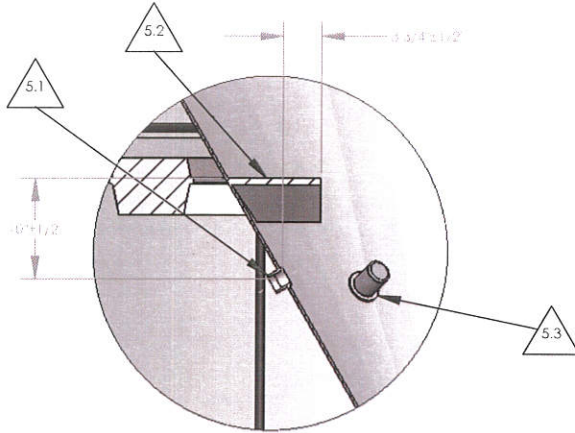
THE INFORMATION CONTAINED IN THIS DRAWING IS THE SOLE PROPERTY OF VELOCITY DYNAMICS, INC. ANY REPRODUCTION IN PART OR WHOLE WITHOUT THE WRITTEN PERMISSION OF VELOCITY DYNAMICS, INC IS PROHIBITED

NOTES -

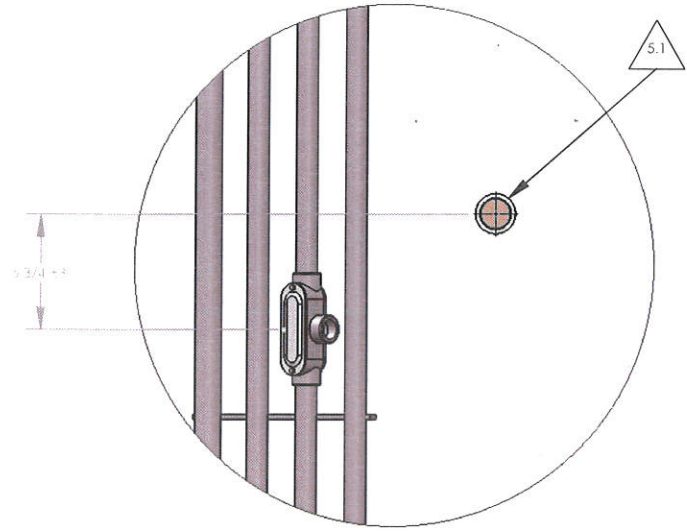
- 5.1) 3X 1.25" FNPT COUPLING FOR MOUNTING ROTARY LEVEL SWITCHES, 2X ON STRAIGHT WALL OF TANK, 1X ON CONE, WELDED NORMAL TO TANK WALL. SEE SHEET 5
- 5.2) WELD "DOG HOUSE" HOODS OVER LOWER TWO LEVEL SWITCH PORTS AS SHOWN
- 5.3) 3X AIR SWEEP ASSEMBLIES PER MANUFACTURER'S SPECIFIED LOCATION



SECTION C-C  
SCALE 1 : 96



DETAIL G  
SCALE 1 : 12



DETAIL F  
SCALE 1 : 6  
2 PLACES



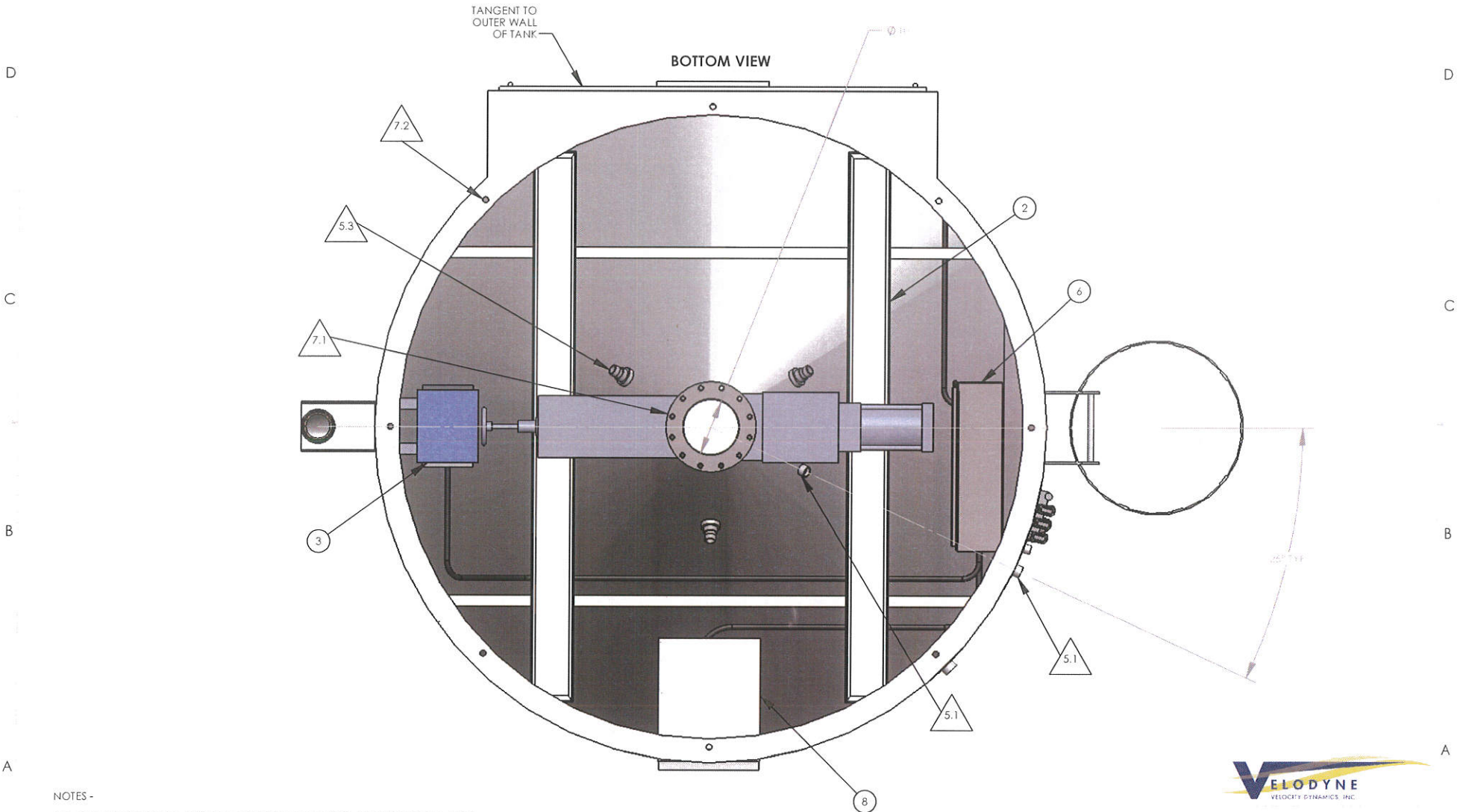
SILO, 10' DIA, 1767 CU FT, IRON MTN

SITE DWG. NO. 600-0015 REV. A  
SCALE 1:20 DO NOT SCALE DRAWING SHEET 5 OF 10



8 7 6 5 4 3 2 1

THE INFORMATION CONTAINED IN THIS DRAWING IS THE SOLE PROPERTY OF VELOCITY DYNAMICS, INC. ANY REPRODUCTION IN PART OR WHOLE WITHOUT THE WRITTEN PERMISSION OF VELOCITY DYNAMICS, INC IS PROHIBITED.



NOTES -

- 7.1) BOLT CIRCLE AND FLANGE DIAMETER EQUIVALENT TO 10" ANSI 150 LB FLANGE
- 7.2) ANCHOR HOLES AND BASE RING PER MANUFACTURER'S STANDARD



SILO, 10' DIA, 1767 CU FT, IRON MTN

SEE DWG NO: 600-0015 REV: A  
 SCALE: 1:16 DO NOT SCALE DRAWING SHEET 4 OF 10  
 1

8

7

6

5

4

3

2

1

8 7 6 5 4 3 2 1

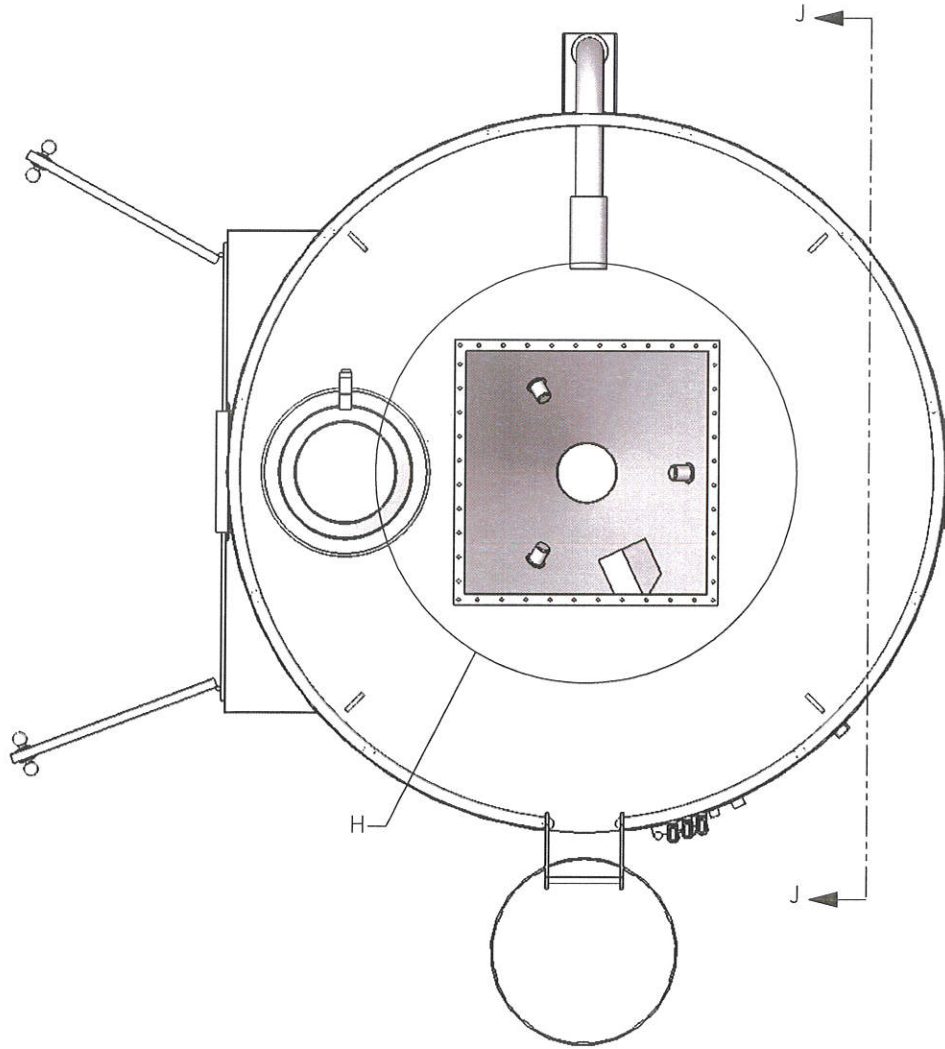
THE INFORMATION CONTAINED IN THIS DRAWING IS THE SOLE PROPERTY OF VELOCITY DYNAMICS, INC. ANY REPRODUCTION IN PART OR WHOLE WITHOUT THE WRITTEN PERMISSION OF VELOCITY DYNAMICS, INC IS PROHIBITED

D

C

B

A



D

C

B

A



SILO, 10' DIA, 1767 CU FT, IRON MTN

SHE DWG NO 600-0015 REV A  
 SCALE 1:20 DO NOT SCALE DRAWING SHEET 7 OF 10

8

7

6

5

4

3

2

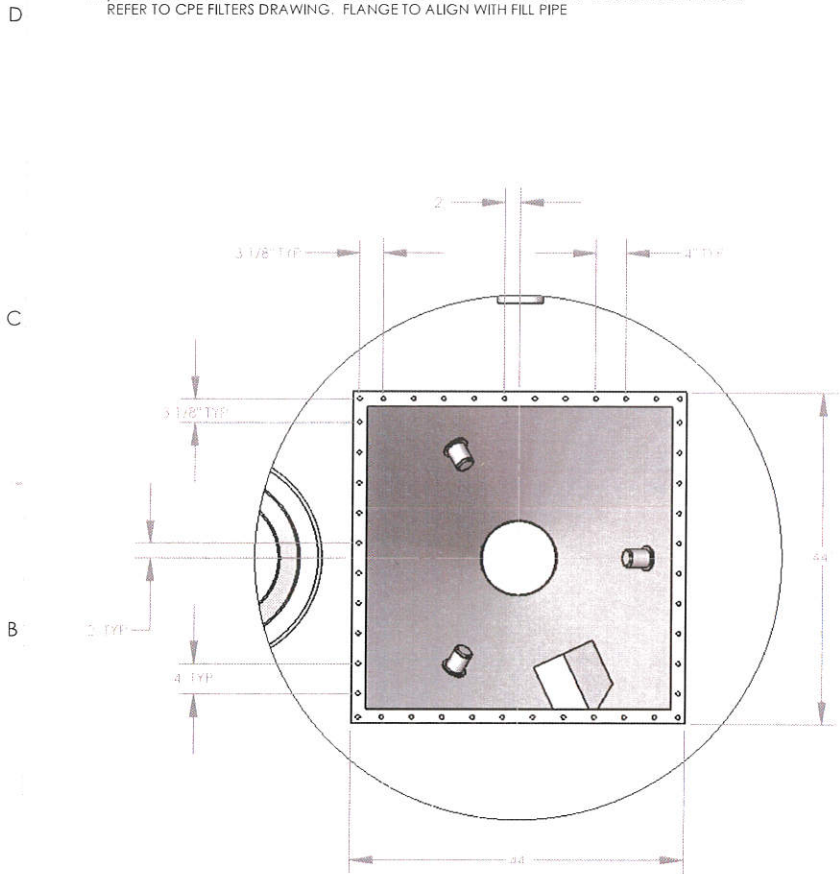
1

8 7 6 5 4 3 2 1

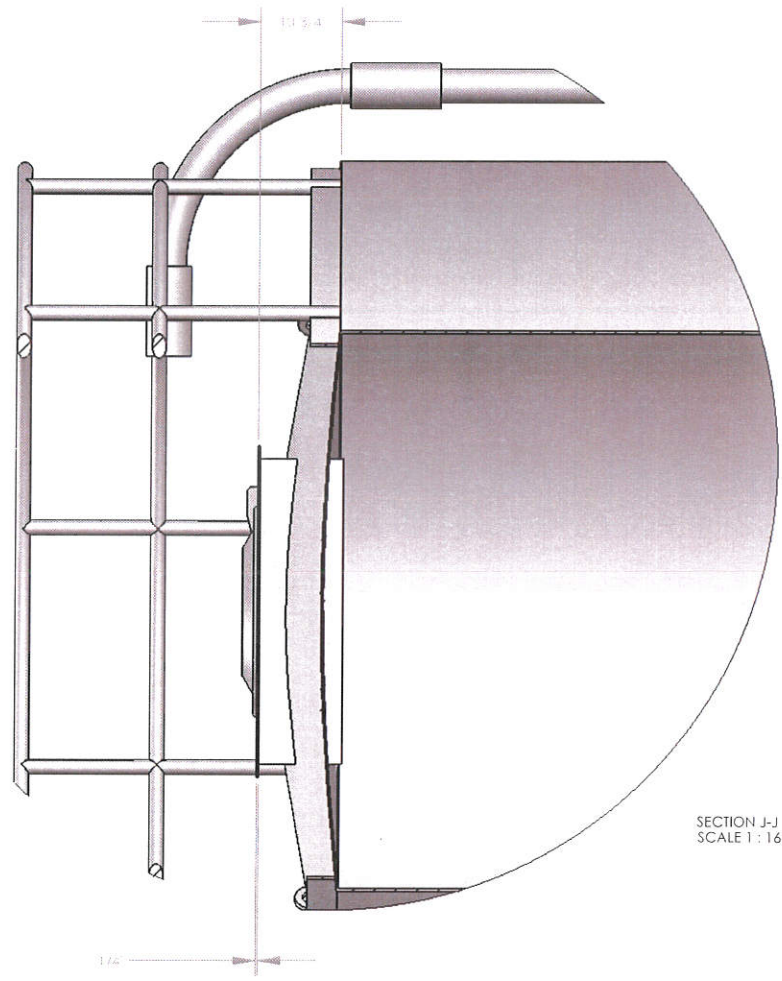
THE INFORMATION CONTAINED IN THIS DRAWING IS THE SOLE PROPERTY OF VELOCITY DYNAMICS, INC. ANY REPRODUCTION IN PART OR WHOLE WITHOUT THE WRITTEN PERMISSION OF VELOCITY DYNAMICS, INC IS PROHIBITED

NOTES -

7.1) PLENUM TO BE DESIGNED TO SUPPORT BIN VENT, FLANGE TO BE .25" THICK STEEL MINIMUM. REFER TO CPE FILTERS DRAWING. FLANGE TO ALIGN WITH FILL PIPE



DETAIL H  
SCALE 1 : 16



SECTION J-J  
SCALE 1 : 16

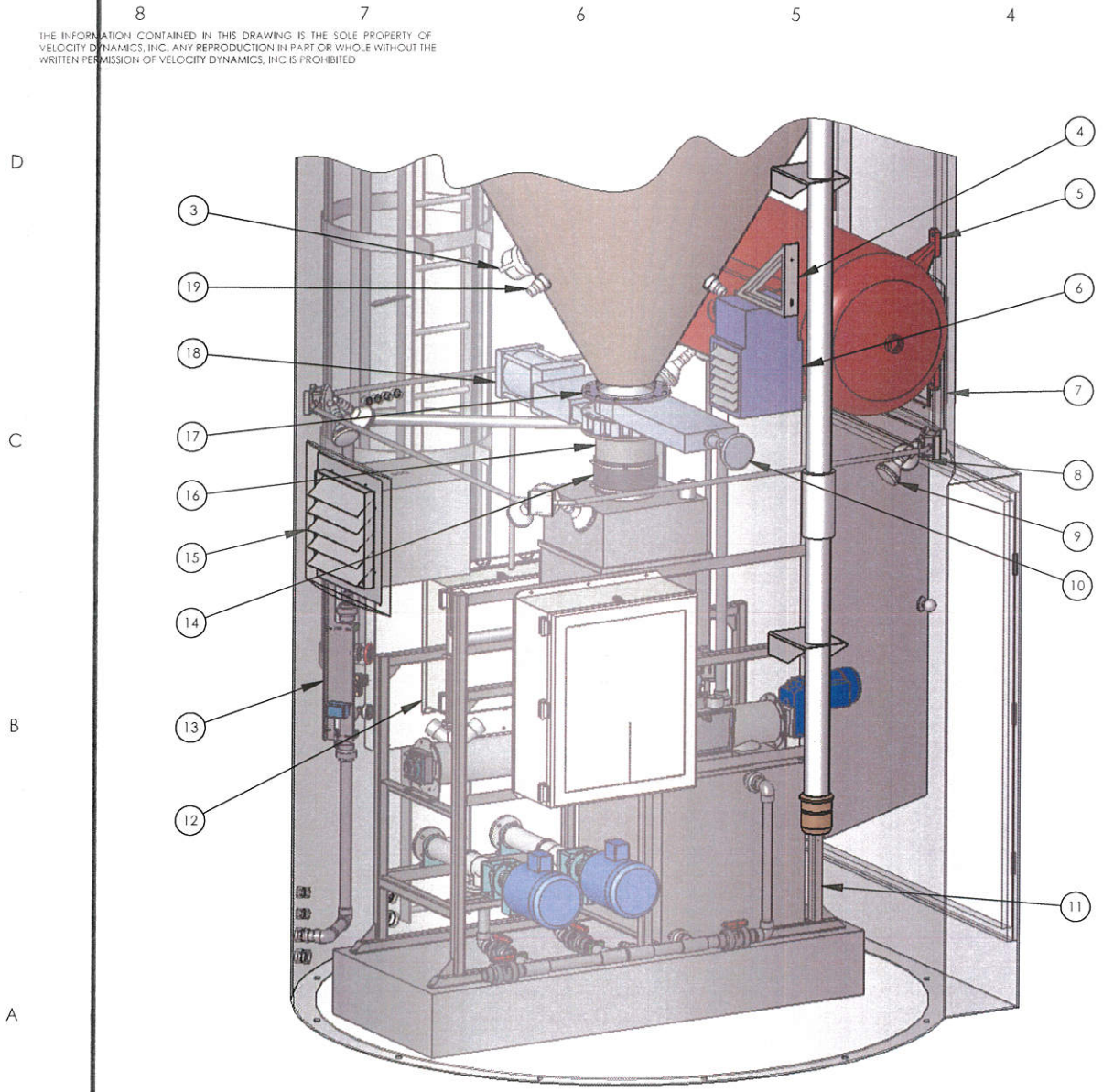


SILO, 10' DIA, 1767 CU FT, IRON MTN

SHE DWG NO: 600-0015 REV: A  
SCALE 1:36 DO NOT SCALE DRAWING SHEET 8 OF 10

8 7 6 5 4 3 2 1

THE INFORMATION CONTAINED IN THIS DRAWING IS THE SOLE PROPERTY OF VELOCITY DYNAMICS, INC. ANY REPRODUCTION IN PART OR WHOLE WITHOUT THE WRITTEN PERMISSION OF VELOCITY DYNAMICS, INC IS PROHIBITED



ITEM #	NUMBER	DESCRIPTION	Qty
1	149-0013	BIN VENT, IRON MTN	1
2	600-0015	SILO, 10' DIA, 1767 CU FT, IRON MTN	1
3	182-0281	SWITCH, LEVEL, PADDLE, NEMA 4X	2
4	104-0189	BRACKET, WALL MOUNTING, 5-15KW HEATER	1
5	236-0400	TANK, PNEUMATIC, 200 GAL, STEEL	1
6	295-0049	HEATER, FORCED AIR, 10KW, 480 VAC	1
7	295-0050	LOUVERS, 20" X 20, AL	1
8	176-0040	LIGHT FIXTURE, 2 BULB FLOOD, OUTDOOR	4
9	176-0041	LIGHT, INCANDESCENT, FLOOD, 120V, 60W, STD BASE	8
10	248-0249	VALVE, GATE, 10", MAINTENANCE, MANUAL	1
11	515-0011	STARCH SYSTEM, IRON MTN	1
12	975-1002	CONTROL PANEL, POWER DISTRIBUTION	1
13	203-0040	DILUTION WATER ASSY, IRON MT	1
14	194-1524	FLEX JOINT, 10" X 6 L, NEOPRENE, W/ CLAMPS	1
15	295-0051	EXHAUST FAN, 16 X 16, 2500 CFM	1
16	194-1738	ADAPTER, 10" ANSI FLG - 10" PIPE	1
17	221-0077	GASKET, 8" ANSI 150 LB, NEOPRENE	3
18	248-0250	VALVE, GATE, 10", PNEUMATIC	1
19	295-0270	NOZZLE ASSY, AIR SWEEP, 1.5"	3



SILO SYSTEM, 1767 CU FT,  
STARCH, IRON MTN

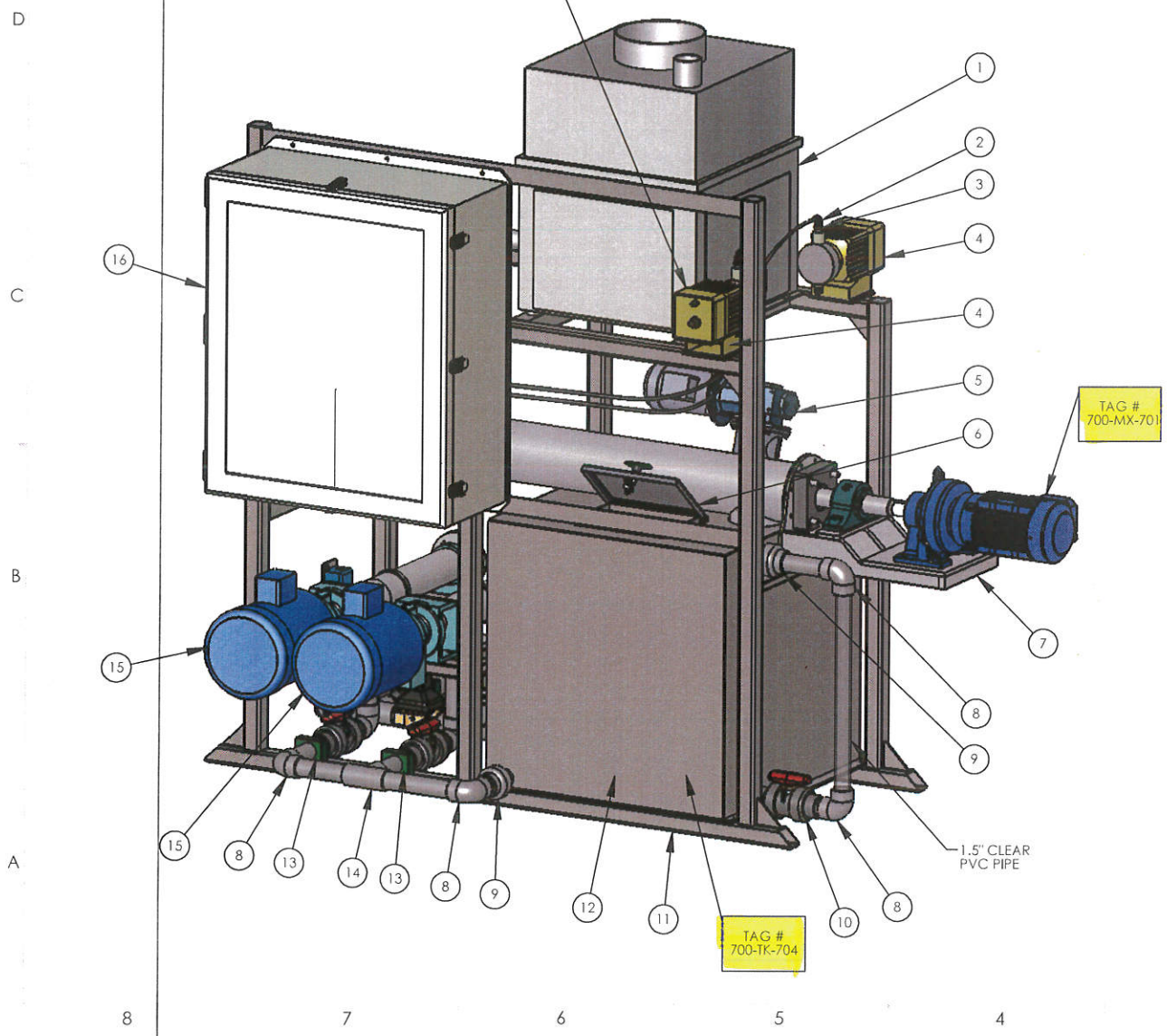
SHEET NO. 600-0016  
SCALE: 1:20 DO NOT SCALE DRAWING SHEET 3 OF 4

8 7 6 5 4 3 2 1

8 7 6 5 4 3 2 1

THE INFORMATION CONTAINED IN THIS DRAWING IS THE SOLE PROPERTY OF VELOCITY DYNAMICS, INC. ANY REPRODUCTION IN PART OR WHOLE WITHOUT THE WRITTEN PERMISSION OF VELOCITY DYNAMICS, INC IS PROHIBITED

REV		REVISIONS		
ECO	DESCRIPTION	DATE	APPROVED	
A	SO 634 INITIAL RELEASE	7/13/11	J Skuba	



ITEM #	NUMBER	DESCRIPTION	QTY
1	251-0271	VOLUMETRIC FEEDER, 2.5 CU FT, 1" AUGER	1
X	194-1326	ELBOW, 1/4" TUBE - 1/4 MNPT, PP	6
X	194-0291	REDUCER, 1/2" X 1/4", TXT, SCH 80, PVC	3
X	215-0222	PUMP, DIAPHRAGM, 8 GPH, LCD DISPLAY, 4-20mA PACING	2
5	143-0001	MIXER, 1/2 HP, 350 RPM, 5/8" SHAFT	1
6	164-0237	HATCH ASSY, HOPPER, 12" X 9"	1
7	295-0269	RIBBON FEEDER, 5' X 6"	1
8	194-0137	ELBOW, 90 DEG, 1 1/2" SOC, PVC	7
9	194-1156	UNION, 1.5", SXT, PVC/VITON	4
10	248-0040	VALVE, BALL, PVC, 1 1/2" NPT/SOC, VITON SEALS	4
11	158-0646	FRAME, SYSTEM, STARCH, IRON MTN	1
12	236-0369	TANK, 100 GAL, 304	1
13	194-0026	CLAMP, PIPE, 1.5", STAUFF	4
14	194-0315	TEE, 1.5" SOC, SCH 80, PVC	2
15	191-0046	MOTOR, 3 HP, 1760 RPM, 460 VAC, 3 PH, 184TC, TEFC, INVERTER DUTY	2
16	973-2001	CONTROL PANEL, STARCH, IRON MTN	1

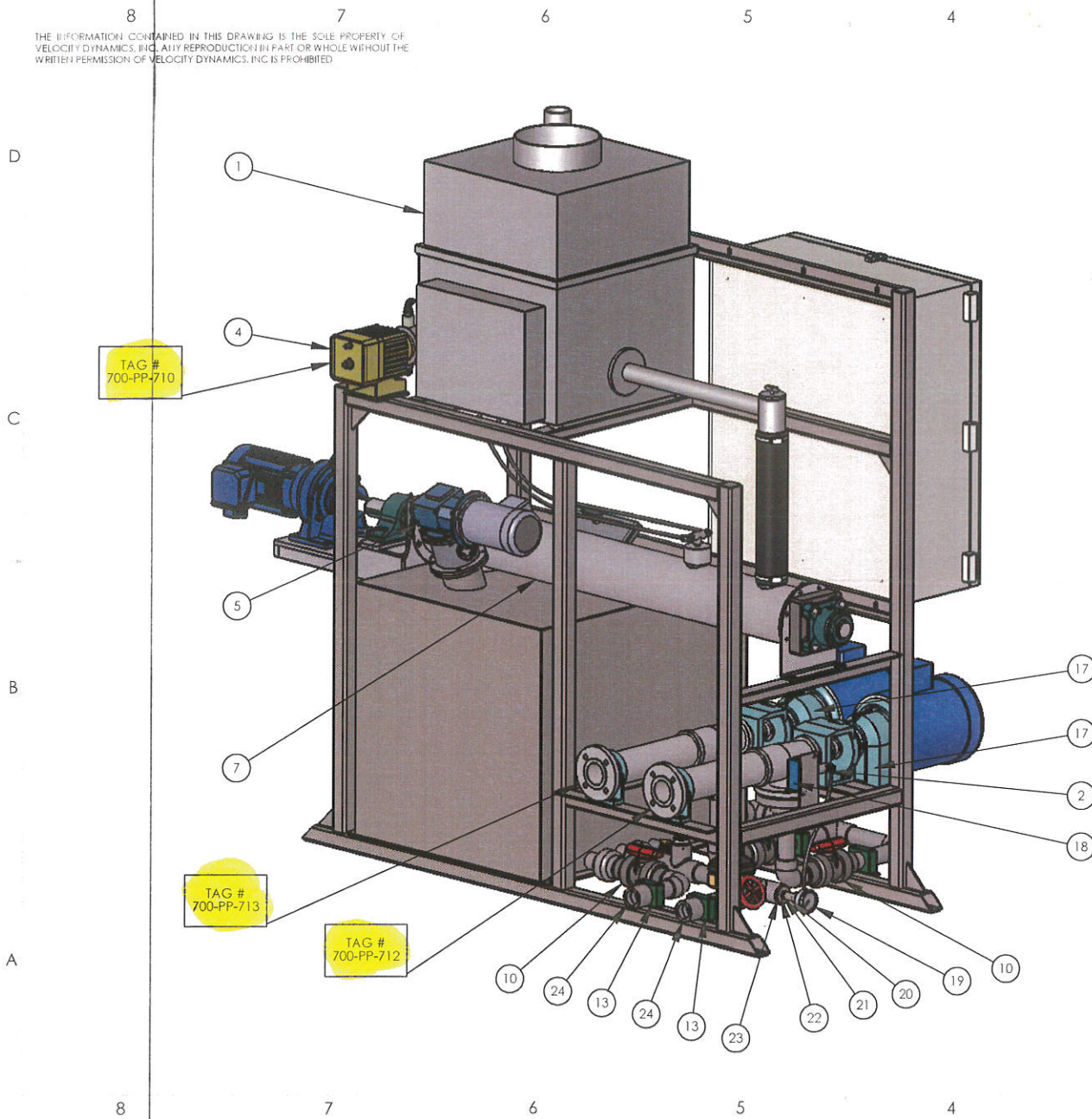
UNLESS OTHERWISE SPECIFIED DIMENSIONS ARE IN INCHES TOLERANCES: DECIMALS: .XX = ±.015 .XXX = ±.005 .5/ MINIMUM FILET RADIUS TO BE .005 MAXIMUM BREAK ALL EDGES .003/.010 MATERIAL PURCHASED FROM P PLACHE QUAL ENG.

CAD GENERATED DRAWING. PREPARE DRAWING PER ANSI Y14.5M-1994 ANGLES ± 1° APPROVALS: MODELLED DATE: 7/13/11 JB SKUBA DRAWN: 7/13/11 JB SKUBA PROJECT MGR: 7/13/11 T OSTROM MATERIAL: 7/13/11 PURCHASED FROM P PLACHE QUAL ENG.

VELOCITY DYNAMICS, INC. STARCH SYSTEM, IRON MTN

SEE DWG NO 515-0011 REV A SCALE 1:1 CAD FILE SHEET 1 OF 5

THE INFORMATION CONTAINED IN THIS DRAWING IS THE SOLE PROPERTY OF VELOCITY DYNAMICS, INC. ANY REPRODUCTION IN PART OR WHOLE WITHOUT THE WRITTEN PERMISSION OF VELOCITY DYNAMICS, INC IS PROHIBITED



ITEM #	NUMBER	DESCRIPTION	QTY
17	215-0172	PUMP, PROG CAV, 3-30 GPM, 4.49:1, SS/VITON	2
18	182-0090	SWITCH, PRESSURE, ABSOLUTE, 3-100 PSI, 1/4" FNPT	1
19	182-0002	GAUGE, PRESSURE, 2.5", 160 PSI, SS/BRASS, 1/4" MNPT, BACK MNT, GLYCERINE FILL	1
20	194-0587	TEE, 1/4", T X T X T, 304	2
21	194-0023	NIPPLE, 1/4" X CLOSE, 304	2
22	194-0607	REDUCER, 1/2" X 1/4", SXT, SCH80, PVC	1
23	194-0949	REDUCER, 1.5" X 1/2", SXS, SCH80, PVC	1
24	194-0622	ADAPTER, FEMALE, 1 1/2", SXT, SCH 80, PVC	2
25	143-0002	IMPELLER, MARINE PROP, LH, 6" X 5/8 BORE, 316	2
26	143-0106	SHAFT, MIXER, 5/8"	1
27	194-0448	FLANGE, 2.5" ANSI 150 LB, 2.5" SOC, PVC	2
28	221-0012	GASKET, 2.5" ANSI 150 LB, NEOPRENE	2
29	194-0455	REDUCER, 2.5" X 1.5", SXS, SCH80, PVC	2
30	182-0213	SENSOR, PRESSURE, 0-1 PSI, 1/4" MNPT	1
31	182-0073	TEE, FLOW METER, INSERTION, 1.5" PVC	1
32	248-0030	VALVE, SOLENOID, 1.5" FNPT, BRASS	1
33	182-0072	FLOW METER, PADDLE WHEEL, 12VDC, 1/2" - 3" PIPE, PVC	1
34	248-0127	VALVE, GLOBE, 1-1/2" SOC, PVC/POLYPRO	1



STARCH SYSTEM, IRON MTN

SHE DWG NO. B 515-0011 REV A  
SCALE 1:12 DO NOT SCALE DRAWING SHEET 2 OF 5

8 7 6 5 4 3 2 1

THE INFORMATION CONTAINED IN THIS DRAWING IS THE SOLE PROPERTY OF VELOCITY DYNAMICS, INC. ANY REPRODUCTION IN PART OR WHOLE WITHOUT THE WRITER'S PERMISSION OF VELOCITY DYNAMICS, INC IS PROHIBITED

D

C

B

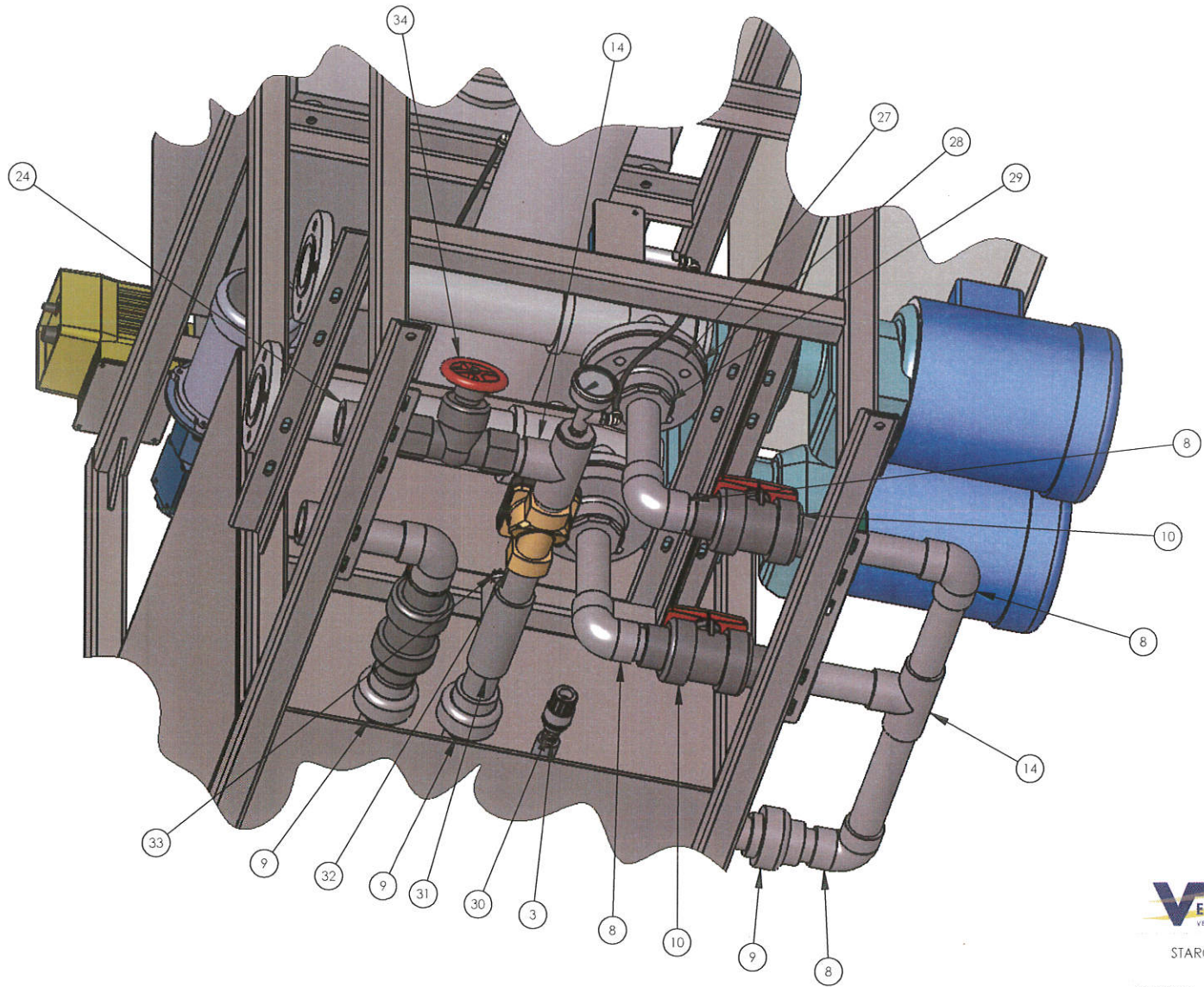
A

D

C

B

A



STARCH SYSTEM, IRON MTN

SEE DWG. NO. 515-0011 REV. A  
 SCALE 1:6 DO NOT SCALE DRAWING SHEET 3 OF 5

8

7

6

5

4

3

2

1

ITEM NO.	PART NUMBER	COMPONENT DESCRIPTION	QTY.
1	X997A-1-5	SECT, SCREW 5-3/8" X 4" PITCH RIBBON W/ MIXING BARS	1
2	X997A-1-6	END PLATE 5-3/8" TUBLAR PEDISTAL MOTOR MOUNT	1
3	X997A-1-71	TROUGH, 6" SCH 40 X 5' OAL	1
4	152-315	DURA-SHIELD SD 2"	2
5	023103	TYPE E ROLLER BEARING 2"	1
6	cyclo	CNHMO56120DBYCAV121 SUMITOMO CYCLO 6000 GEARMOTOR	1
7	023010	BEARING, 2" TYP-E ROLLER	1
8	X997A-1-31	END PLATE 5-3/8" TUBLAR TROUGH 2" SHAFT	1
9	X997A-1-36	SPRAY NOZZLE CAP H 1/4 VV 316SS 4001	1

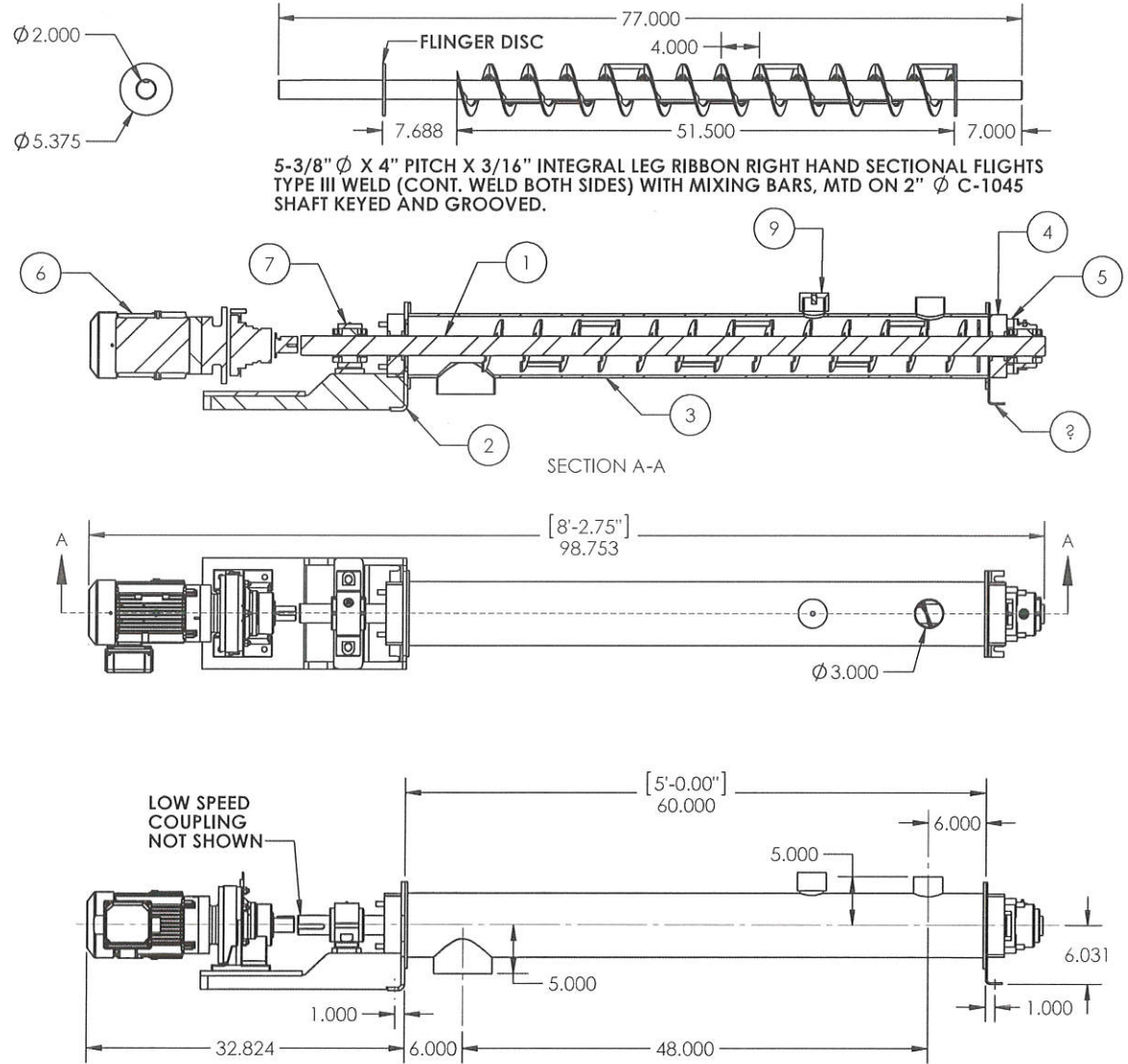
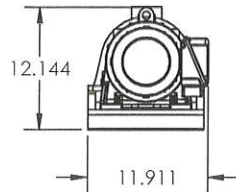
NOTES:  
 ORIENTATION: HORIZONTAL  
 CONSTRUCTION MATERIAL: MILD STEEL  
 CONVEYED MATERIAL: STARTCH/SODIUM HYDROXIDE MIX  
 MATERIAL DENSITY: 42 LBS/ CU.FT  
 CAPACITY: 3 CU.FT /HR  
 CONVEYOR SPEED: 15 RPM  
 FINISH: ORTHMAN BLUE

DRIVE REQUIREMENTS:  
 CLASS III SERVICE SIZED FOR UPSET CONDITION  
 100% FULL 3/4 HP @ 15 RPM SUMITOMO CYCLO 6000  
 GEARMOTOR DIRECT DRIVE: CNHMOK56120DBYCAV121  
 WITH 1-1/2" X 2" PALAFLEX LOW SPEED COUPLING W/GUARD  
 MOTOR: 3/4 HP 3/60/130-460/TEFC INVERTER DUTY INTEGRAL

TAG #  
700-MX-701

295-0269 rev A  
RIBBON FEEDER, 5' X 6"  
7/13/11

Orthman X997A-1



CML METALS PLANT SC6-5

RAW MATERIAL PART NUMBER AND DESCRIPTION

TITLE  
 Velodyne  
 P.O. # 028543-00  
 OCS

Orthman  
 ORTHMAN MFG. INC.  
 P.O. BOX 8  
 LEONINGTON, N.E. OHIO  
 SCALE PAGE  
 1:12 1 OF 1 NDM  
 FOR APPROVAL

THIS DRAWING AND ALL INFORMATION THEREON IS THE PROPERTY OF ORTHMAN MFG. INC. IT IS LOANED CONFIDENTIALLY AND MUST NOT BE USED IN ANY WAY DETRIMENTAL TO OUR INTEREST. CHG CHK

REVISION RECORD

DATE ECN REV

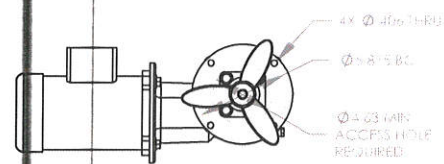
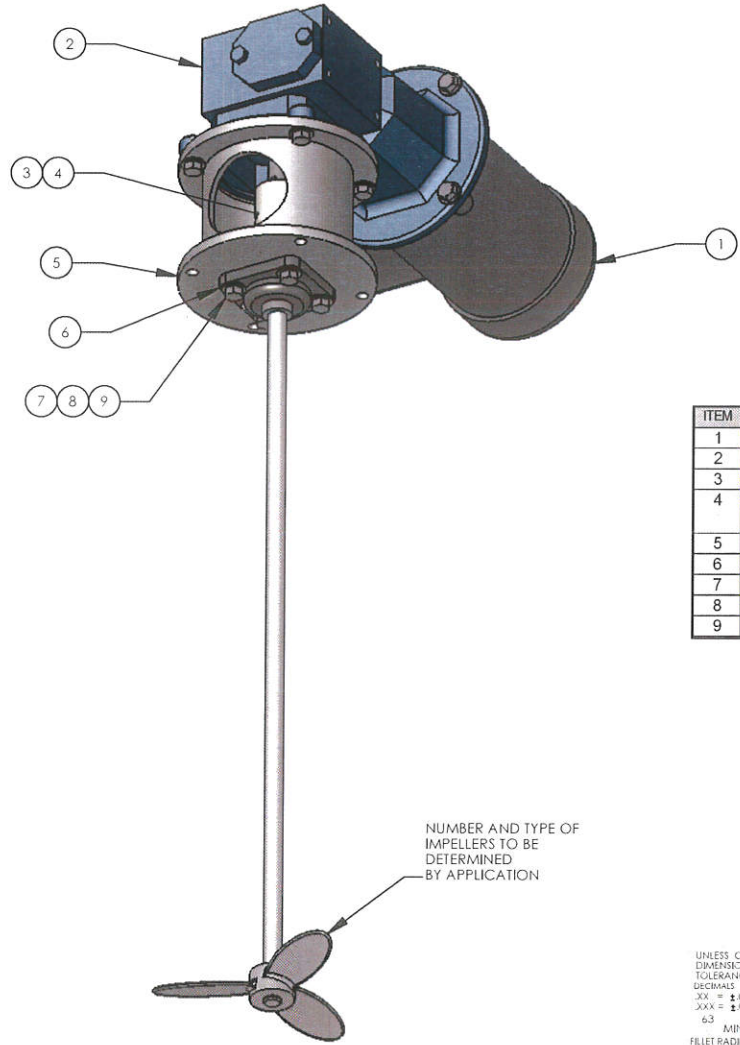
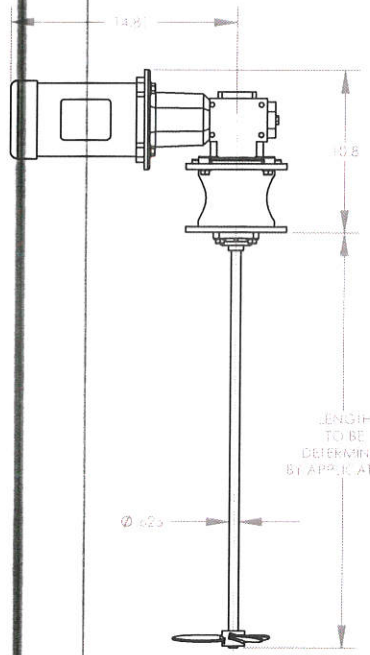
ORTHMAN  
 X997A-1  
 PART NUMBER



8 7 6 5 4 3 2 1

THE INFORMATION CONTAINED IN THIS DRAWING IS THE SOLE PROPERTY OF VELOCITY DYNAMICS, INC. ANY REPRODUCTION IN PART OR WHOLE WITHOUT THE WRITTEN PERMISSION OF VELOCITY DYNAMICS, INC IS PROHIBITED.

REV		REVISIONS		
ECO	DESCRIPTION	DATE	APPROVED	
A	J5071127	INITIAL RELEASE	12/10/07	JStobg



ITEM	QTY	PART NO	DESCRIPTION
1	1	191-0002	MOTOR, 1/2 HP, 1750 RPM, 480 VAC, 56C, TEFC
2	1	140-0005	GEAR REDUCER, 5:1, RT ANGLE, 56C
3	2	140-0006	COUPLING, SHAFT, 5/8" - SPIDER, SS
4	1	140-0007	SPIDER, COUPLING, 561 IN-LB, HYTREL, SERIES E
5	1	143-0050	ADAPTER, 56C, BEARING FRAME, 5/8" MIXER
6	1	140-0014	BEARING, FLG MNT, 5/8"
7	12	155-0038	BOLT, HEX, 3/8-24 X 1" L, 18-8
8	16	155-0064	WASHER, FLAT, 3/8", 18-8
9	4	155-0049	NUT, HEX 3/8-16, 18-8

UNLESS OTHERWISE SPECIFIED DIMENSIONS ARE IN INCHES

TOLERANCES:  
 DECIMALS .XX = ±.015  
 .XXX = ±.005

ANGLES 1/1°

MINIMUM FILLET RADIUS TO BE .005 MAXIMUM BREAK ALL EDGES .005/.010 MATERIAL

CAD GENERATED DRAWING - REDDFRST  
 DRAWING PER ANSI Y14.5M - 1994

APPROVALS DATE  
 DRAWN BY JB SKUBA 12/10/07  
 CHECKED BY P PLACHE 12/10/07  
 RESP ENG

MFG ENG  
 QUAL ENG

FILENAME 143-0001  
 DO NOT SCALE DRAWING



MIXER, 1/2 HP, 350 RPM, 5/8" SHAFT

SHEET 1 OF 1

SCALE 1:4 CAD FILE

143-0001

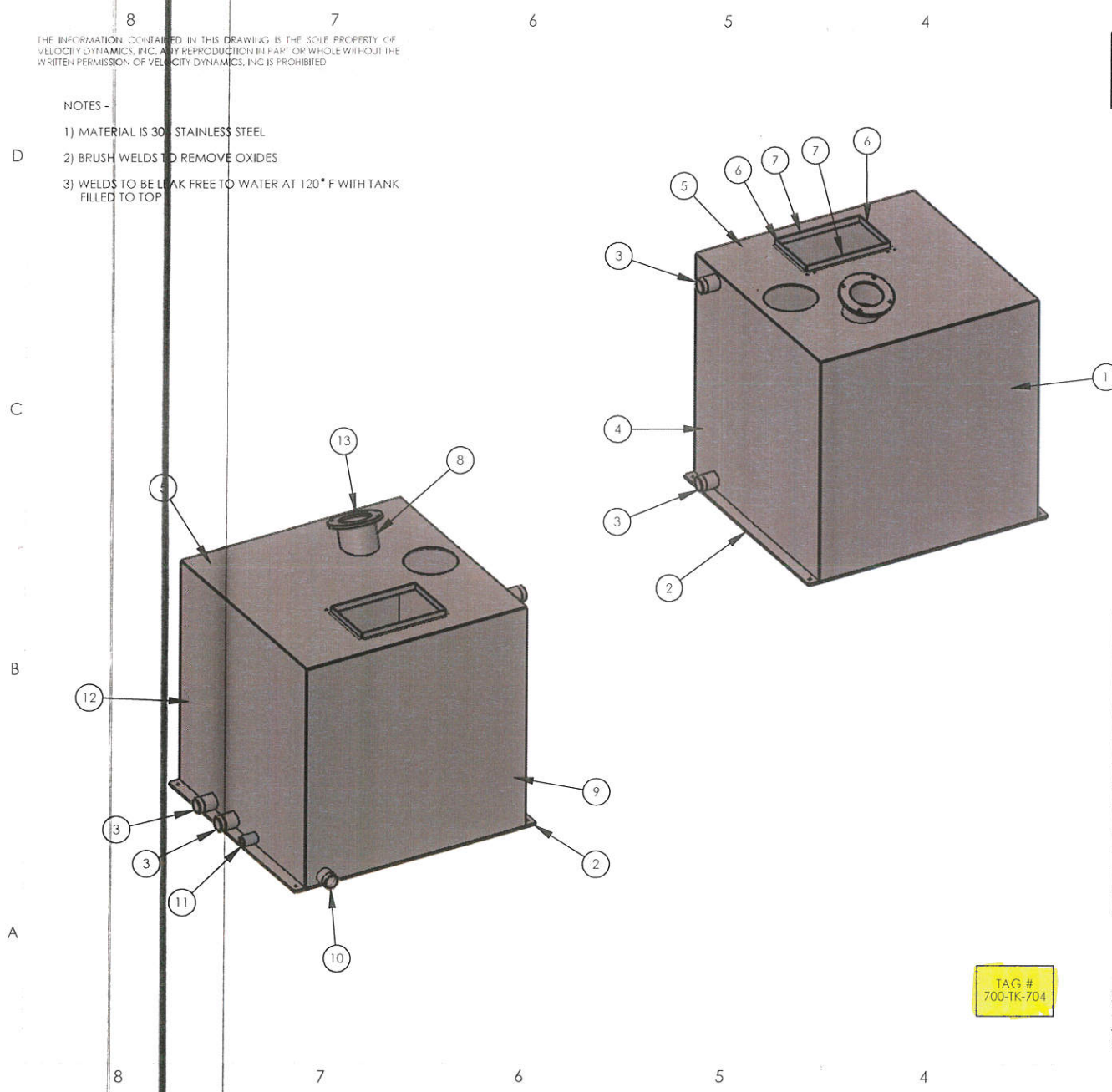
REV A

THE INFORMATION CONTAINED IN THIS DRAWING IS THE SOLE PROPERTY OF VELOCITY DYNAMICS, INC. ANY REPRODUCTION IN PART OR WHOLE WITHOUT THE WRITTEN PERMISSION OF VELOCITY DYNAMICS, INC IS PROHIBITED

NOTES -

- 1) MATERIAL IS 304 STAINLESS STEEL
- 2) BRUSH WELDS TO REMOVE OXIDES
- 3) WELDS TO BE LEAK FREE TO WATER AT 120°F WITH TANK FILLED TO TOP

REVISIONS				
REV	ECO	DESCRIPTION	DATE	APPROVED
A	SO 634	INITIAL RELEASE	7/13/11	J Skuba



ITEM #	NUMBER	DESCRIPTION	QTY
1	236-0375	WALL, R, TANK, 100 GAL, 304	1
2	236-0370	FLOOR, TANK, 100 GAL, 304	1
3	194-1427	NIPPLE, HALF, 1.5" X 2.50 L, 304	4
4	236-0372	WALL, BACK, TANK, 100 GAL, 304	1
5	236-0374	COVER, TANK, 100 GAL, 304	1
6	164-0238	EDGE ANGLE, HATCH, 7.38" L	2
7	164-0007	EDGING, HATCH, 11.325 L	2
8	236-0367	TUBE, MIXER MNT, STARCH, IRON MTN	1
9	236-0371	WALL, L, TANK, 100 GAL, 304	1
10	194-0139	NIPPLE, HALF, 1.5" X 2.00 L, 304	1
11	194-0167	COUPLING, 1/2" FNPT, 304	1
12	236-0373	WALL, FRNT, TANK, 100 GAL, 304	1
13	236-0376	FLANGE, MIXER MNT, STARCH, IRON MTN	1

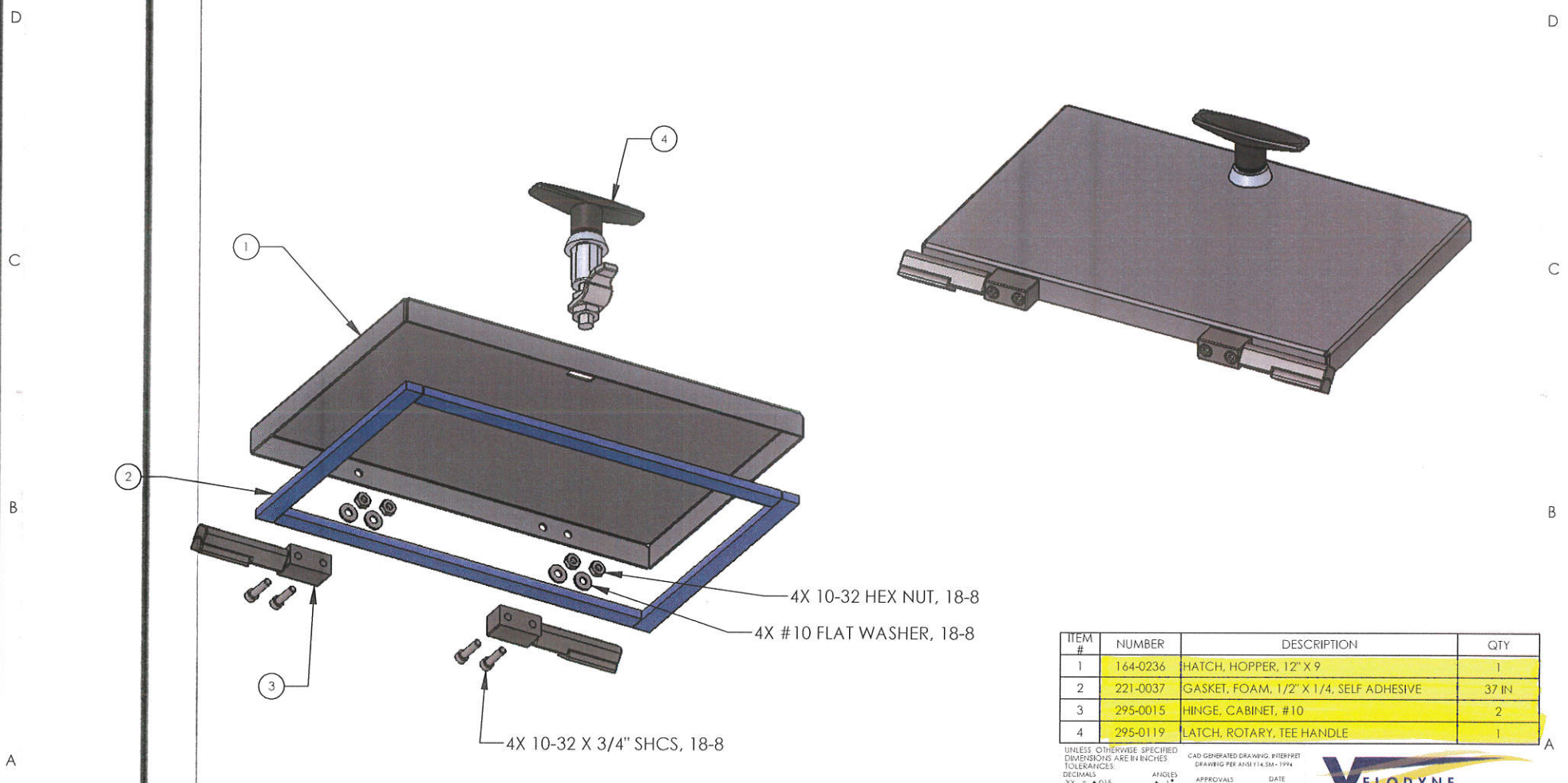
TAG #  
700-TK-704

UNLESS OTHERWISE SPECIFIED DIMENSIONS ARE IN INCHES  
 TOLERANCES:  
 DECIMALS .XX = ± 0.015  
 .XXX = ± 0.005  
 ANGLES ± 1°  
 APPROVALS  
 MODIFIED BY JB SKUBA 7/13/11  
 DRAWN BY JB SKUBA 7/13/11  
 PROJECT MGR T OSTROM 7/13/11  
 PURCHASING MGR P PLACHE 7/13/11  
 QA/ENGR  
 TEENAME 236-0369  
 DO NOT SCALE DRAWING

**VELOCITY DYNAMICS, INC.**  
 TANK, 100 GAL, 304  
 236-0369  
 SCALE 1:12 CAD FILE  
 SHEET 1 OF 2

8 7 6 5 4 3 2 1  
 THE INFORMATION CONTAINED IN THIS DRAWING IS THE SOLE PROPERTY OF VELOCITY DYNAMICS, INC. ANY REPRODUCTION IN PART OR WHOLE WITHOUT THE WRITTEN PERMISSION OF VELOCITY DYNAMICS, INC. IS PROHIBITED.

REVISIONS				
REV	ECO	DESCRIPTION	DATE	APPROVED
A	SO 634	INITIAL RELEASE	7/13/11	J Skuba



4X 10-32 HEX NUT, 18-8  
 4X #10 FLAT WASHER, 18-8

4X 10-32 X 3/4" SHCS, 18-8

ITEM #	NUMBER	DESCRIPTION	QTY
1	164-0236	HATCH, HOPPER, 12" X 9"	1
2	221-0037	GASKET, FOAM, 1/2" X 1/4", SELF ADHESIVE	37 IN
3	295-0015	HINGE, CABINET, #10	2
4	295-0119	LATCH, ROTARY, TEE HANDLE	1

UNLESS OTHERWISE SPECIFIED DIMENSIONS ARE IN INCHES  
 TOLERANCES: DECIMALS: .XX = ±.015 .XXX = ±.005  
 ANGLES: ± 1°  
 MINIMUM: .005  
 FILLET RADIUS TO BE .005 MAXIMUM  
 BREAK ALL EDGES .005/.010  
 MATERIAL: ALUMINUM  
 FEEDNAME: 164-0237  
 DO NOT SCALE DRAWING

CAD GENERATED DRAWING. INTERPRET DRAWING PER ANSI Y14.5M-1994

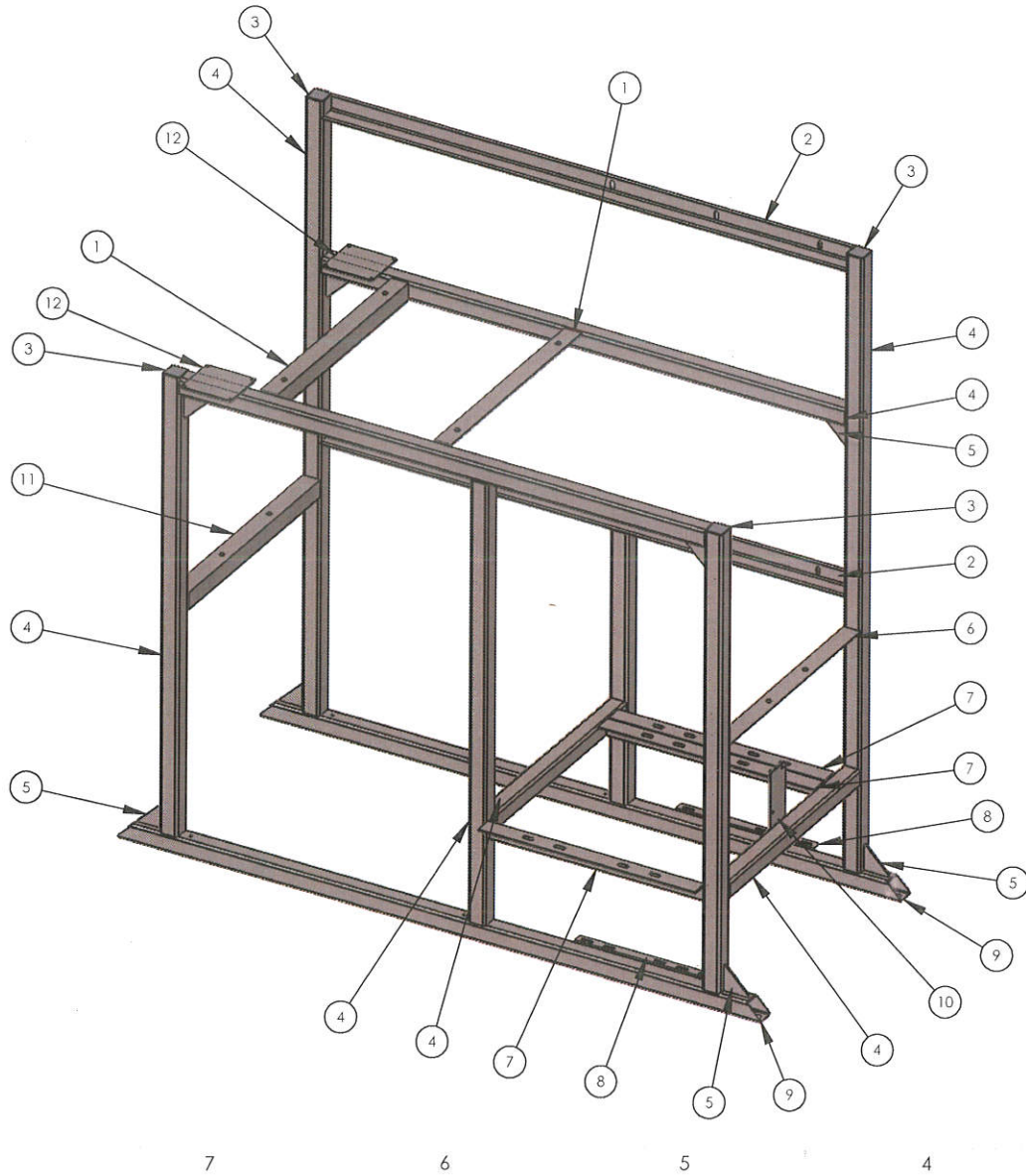
APPROVALS: DATE: 7/13/11  
 MODELED: JB SKUBA  
 DRAWN: JB SKUBA  
 PROJECT MGR: JB SKUBA  
 PURCHASING MGR: T OSTROM  
 QUAL ENG: P PLACHE

**VELOCITY DYNAMICS, INC.**  
 HATCH ASSY, HOPPER, 12" X 9"

SHEET 1 OF 1

8 7 6 5 4 3 2 1

THE INFORMATION CONTAINED IN THIS DRAWING IS THE SOLE PROPERTY OF VELOCITY DYNAMICS, INC. ANY REPRODUCTION IN PART OR WHOLE WITHOUT THE WRITTEN PERMISSION OF VELOCITY DYNAMICS, INC IS PROHIBITED



REVISIONS				
REV	ECO	DESCRIPTION	DATE	APPROVED
A	SO 634	INITIAL RELEASE	7/13/11	J Skuba

NOTES -

- 1) MATERIAL IS 304 STAINLESS STEEL, 10 GA SHEET
- 2) 64 RA MAX FINISH ALL MACHINED SURFACES
- 3) REMOVE ALL BURRS AND BREAK ALL EDGES .02 MAX

ITEM #	NUMBER	DESCRIPTION	QTY
1	158-0648	SPAN, VOL FEEDER, STARCH, IRON MTN	2
2	158-0650	SPAN, CONTROL, STARCH, IRON MTN	2
3	158-0054	CAP, COLUMN, FRAME, 2" X 2	4
4	295-0054	TUBE, SQUARE, 2" X 2 X .125, 304	503.5 IN
5	158-0005	GUSSET, PLATE, 3" X 3 X 1/4, 304	8
6	158-0647	SPAN, RBN FEEDER, UP, STARCH, IRON MTN	1
7	158-0651	SPAN, PC PUMP, STARCH, IRON MTN	3
8	104-0176	BRACKET, PIPE CLAMP, 2X 1.5"	2
9	158-0645	FOOT, FRAME, 2" SQR X 74 L	2
10	104-0121	BRACKET, SUPPORT, P SWX	1
11	158-0649	SPAN, RBN FEEDER, DN, STARCH, IRON MTN	1
12	104-0175	BRACKET, PUMP, LMI C SERIES	2

UNLESS OTHERWISE SPECIFIED  
DIMENSIONS ARE IN INCHES  
TOLERANCES:  
DECIMALS  
XX = ± .015  
XXX = ± .005  
6.3  
MINIMUM  
FILET RADIUS TO BE .005 MAXIMUM  
BREAK ALL EDGES (.005) DIA  
MATERIAL  
P PLACHE  
QUAL ENG

CAD GENERATED DRAWING. INTERPRET DRAWING FOR ASSEMBLY PER  
APPROVALS DATE  
MODELED  
JB SKUBA 7/13/11  
DRAWN  
JB SKUBA 7/13/11  
PROJECT MGR  
T OSTROM 7/13/11  
PURCHASING MGR  
P PLACHE 7/13/11  
SHEET NO. 158-0646  
SCALE 1:12 CAD FILE  
REV A  
SHEET 1 OF 5